



The Church of England  
in Essex and East London  
Diocese of Chelmsford

“For just as each of us has one body with many members, and these members do not all have the same function, so in Christ we, though many, form one body, and each member belongs to all the others.”

Romans 12: Verses 4-5  
Holy Bible NIV copyright



### Find out more

[www.chelmsford.anglican.org/parish-share-2024](http://www.chelmsford.anglican.org/parish-share-2024)

 @chelmsdio     chelmsdio     chelmsdio

The Chelmsford Diocesan Board of Finance is a registered charity, No 249505.  
A company limited by guarantee – Registered in England No 137029.



# Funding local parish ministry

Parish Share 2024 explained



## How are our churches funded?

People are often surprised to discover that Parish churches are largely funded by voluntary donations and giving.

It is thanks to this generosity that churches can pay for the maintenance and running cost of their buildings, any staff they employ and all their activities.

Funding for ministers such as vicars and their houses comes from Chelmsford Diocese which serves all the Church of England churches in Essex and East London.

But Chelmsford Diocese is reliant on local parish churches to provide most of this funding in the first place through an annual contribution called Parish Share.

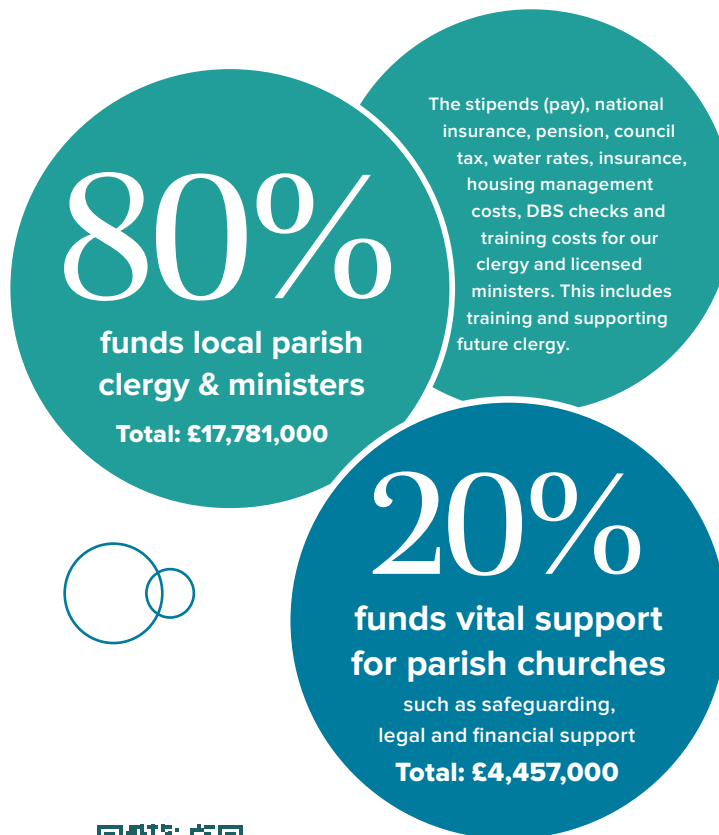
So, your local parish church is funded almost entirely by the generosity of worshippers and the local communities they serve.



## What does Parish Share pay for?

- Each Parish is asked to make a Parish Share contribution each year.
- The Parish Share is put into the Diocesan General Fund Budget, alongside other money Chelmsford Diocese raises. £16.3m of the £22.2m budget comes from Parish Share (73%)
- The budget is used to resource and support local parish ministry as set out in the diagram below.

### Our Diocesan General Fund Budget



The stipends (pay), national insurance, pension, council tax, water rates, insurance, housing management costs, DBS checks and training costs for our clergy and licensed ministers. This includes training and supporting future clergy.



Scan to read our FAQs about how Parish Share is spent.

## Who decides how much each parish is asked to contribute?

Parish Share changed in 2023 following a major parish consultation. The consultation told us that Parish Share should:

- **Help parishes to mutually support each other**, with those better able to contribute, supporting those less able:
  - Parishes in areas of economic deprivation, those facing the particular challenges of rural ministry and parishes without full time stipendiary (paid) clergy are asked to contribute less than others.
  - Parishes are encouraged to come together with neighbouring churches in their deaneries to discuss whether they can help each other.
- **Be transparent and just** - previously there were inconsistencies in how share was calculated, which caused a sense of injustice. In the new Parish Share Scheme every contribution is calculated using the same transparent formula.



How the new parish share scheme works.

## How do churches raise the money they need?

The past few years have been extraordinarily challenging for our parish churches and the communities they serve. As with all charities they continue to be almost entirely dependent on people's generosity. Without giving and donations, most churches would simply not be able to pay their bills and their Parish Share, which means Chelmsford Diocese would not be able to pay for clergy and ministers. We are enormously grateful to those in our churches and local communities who have continued to support their local parish church through this time..

## How can I help?

If you are able to give to your local parish church or would like to increase how much you give, please speak with someone on your church leadership team or visit your church website.

Thank you!